

# Reducing Scope 3 Emissions with Donau Soja

# DONAU SOJA...

- is an independent, member-based, multi-stakeholder organisation;
- is fully democratic & transparent;
- is supported by 24 governments (Donau Soja & Europe Soya Declarations);
- has more than 320 members in 30 countries;
- is non-profit (recognised as such by the Austrian government);
- operates in several sectors (including plant breeding, farming, food & feed production & processing, sales & distribution, retail), & also involves civil society.

 Austrian  
Development  
Agency



Headquarter: Vienna, Austria

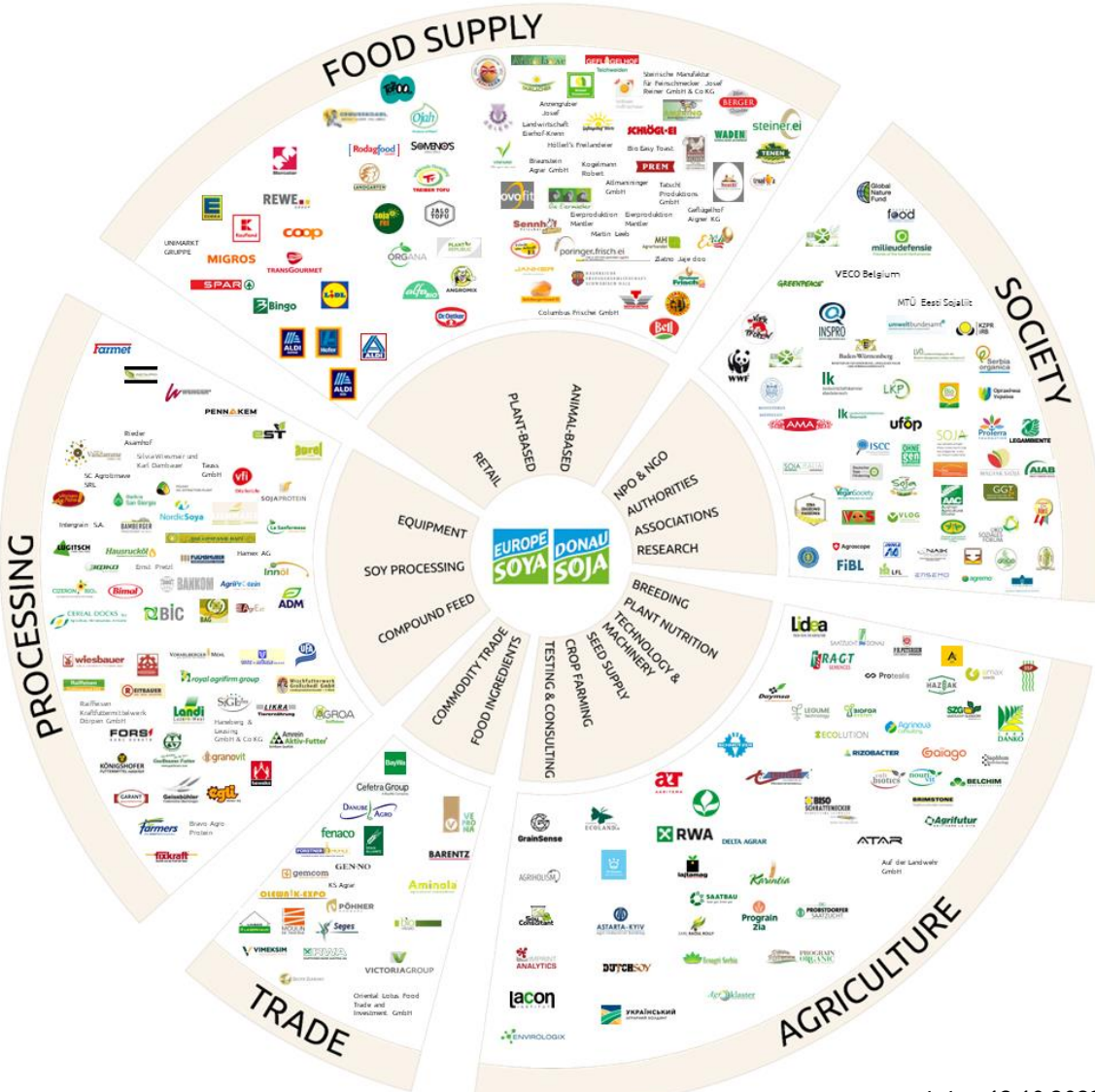
Regional Office for SEE: Novi Sad, RS

Regional Office for CEE: Kiev, UA

Regional Office for MD: Chişinău

# DONAU SOJA MEMBERS

>320 members in 30 countries



©Donau Soja

status 12.10.2023

# VISION & MISSION OF DONAU SOJA

 Austrian  
Development  
Agency



## OUR VISION

**A Sustainable, Safe & European Protein Supply.**



## OUR MISSION

Donau Soja **supports** its partners & members in progressing change to address **social, environmental & economic challenges in soya production & consumption**. This will increase efficiency, fairness & sustainability in European food & feed protein value chains.



# CLIMATE

**Global Context**  
**The role of animal feed**  
**Soya bean LCA data**



# WHY SOYA

Europeans on  
average consume  
**> 60 kg soya  
per capita  
per year**

**90% of it  
is consumed  
indirectly  
as animal feed**

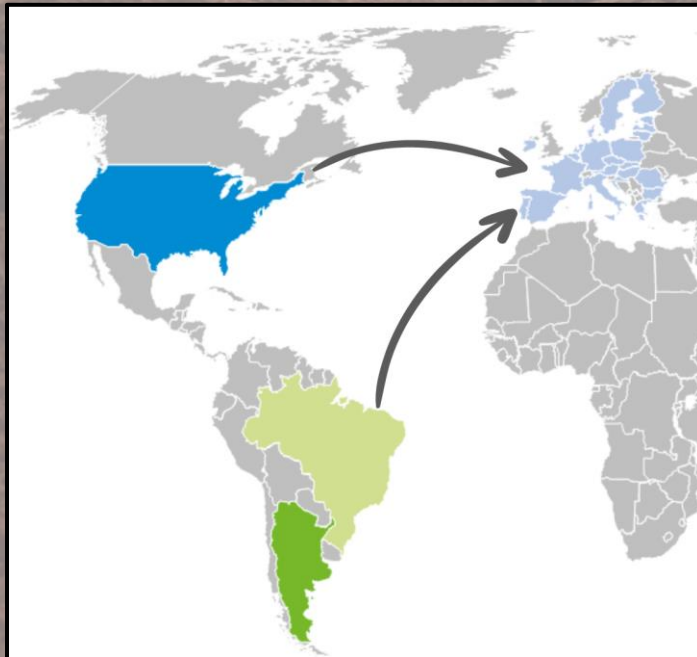
## How is this possible?!

→ **Hidden soya**

is a relevant factor in animal-based products



# BACKGROUND



~ **34 Mio tonnes** soya bean equivalents  
imported to the EU-27 in 2022 (DG Agri,  
2023)

~**24 %** of imports are deforestation free  
(incl. credits)\*

\*Figures based on European Soy Monitor 2021



# BACKGROUND



**Deforestation** is responsible for about **11%** of global human greenhouse gas emissions (IPCC, 2019)

**EU is the world's second biggest importer of tropical deforestation** (WWF, 2021)

**Soya is accountable for 31% of deforestation from agricultural products imported into the EU** (WWF, 2021)





# SETTING TARGETS



The carbon footprint of animal-based products is largely determined by feed

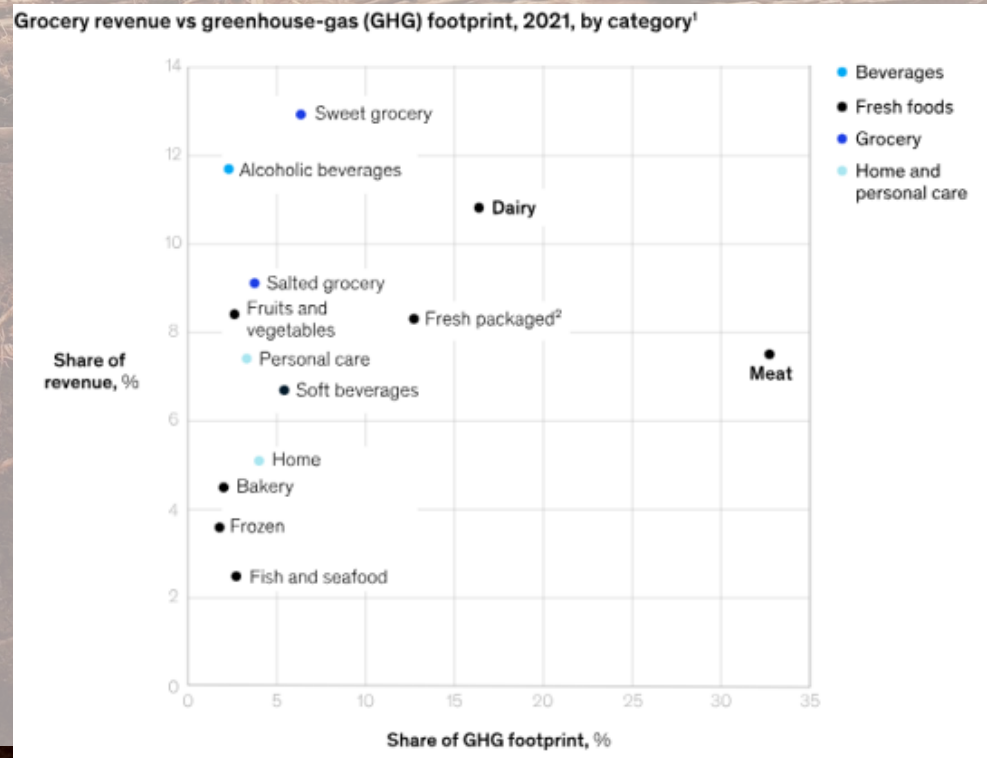


# SETTING TARGETS

Scope 3 emissions account for > 90% of the corporate carbon footprint of retailers

In retail, dairy & meat products account for ~ 50% of all product-related scope 3 emissions

**Meat & dairy products are key to reduce scope 3 emissions!**

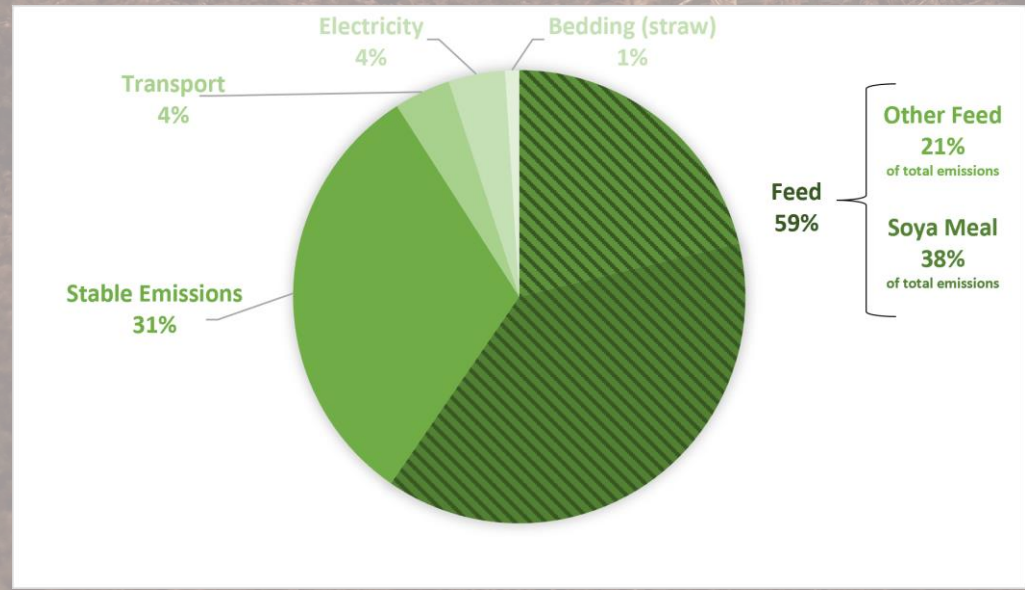


Source: McKinsey & Company



# THE ROLE OF FEED

Example: Carbon footprint of pig production



Source: FiBL 2021

Feed accounts for the biggest part of the carbon footprint of animal-based products

**Biggest factor in conventional feed are emissions from deforestation and land conversion related to soya**



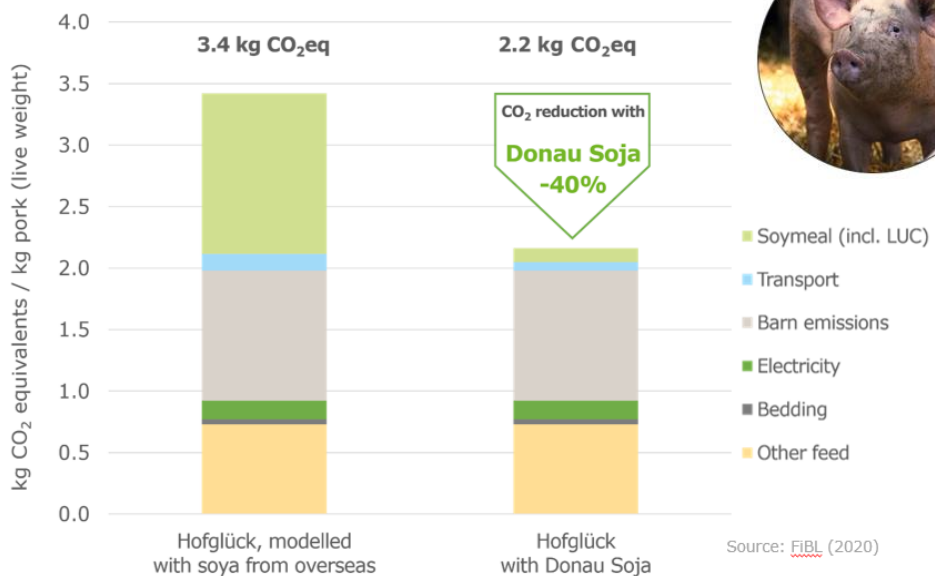
# THE ROLE OF FEED

## Example EDEKA Hofglück

Hofglück pigs with Donau Soja / Europe Soja certified feed **reduce the carbon footprint in pork production by 40%.**

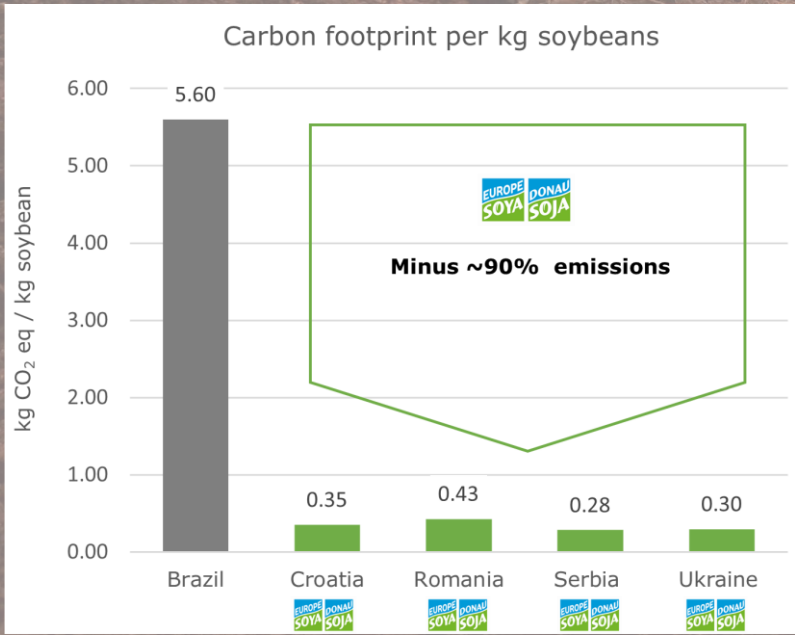


Carbon footprint of 1 kg of pork





# SOYA BEAN DATA



Source: Agrifootprint 5.0.; Blonk Consultants, 2022

**Donau Soja / Europe Soya are deforestation- & conversion-free.**

The CO<sub>2</sub> footprint is ~0,3-0,4 kg CO<sub>2</sub>-eq / kg soya beans.



# SOYA BEAN DATA

SBTi FLAG  
version  
available

**Donau Soja / Europe Soya LCA datasets are available in LCA tools & databases for calculations**



<https://blonksustainability.nl/news/donau-soja-disclosed-environmental-data-of-soybeans>

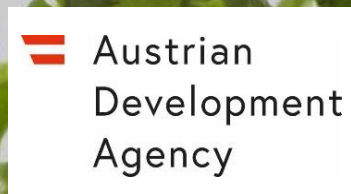


<https://globalfeedlca.org/branded-data-pilot-participants/>



[https://www.sustell.com/en\\_US/home.html](https://www.sustell.com/en_US/home.html)

**...and on request from the Donau Soja team.**



# Start setting soya-related climate targets with Donau Soja

**Using Donau Soja / Europe Soya certified soya is the biggest lever to reduce the CO<sub>2</sub> footprint of animal products!**

**Soya in animal feed often accounts for the biggest shares of scope 3 emissions for meat & dairy products. Meat & dairy products are a major part of scope 3 emissions for companies like retailers.**

**Donau Soja/Europe Soya certified soybeans show up to 90% reduction in CO<sub>2</sub> emissions.**

**This data is available in recognised databases & SBTi compliant format to calculate your own CO<sub>2</sub> footprint.**

**Contacts:**

**We are here for you!**

 Austrian  
Development  
Agency



**Julia Weihs**

**Director Standard &  
Sustainability**

Mail: [weihs@donausoja.org](mailto:weihs@donausoja.org)



**Christoph Müller**

**Director Advocacy & Policy**

Mail: [mueller@donausoja.org](mailto:mueller@donausoja.org)



**Susanne Fromwald**

**Senior Advisor & Project Leader  
Protein Partnerships**

Mail: [fromwald@donausoja.org](mailto:fromwald@donausoja.org)