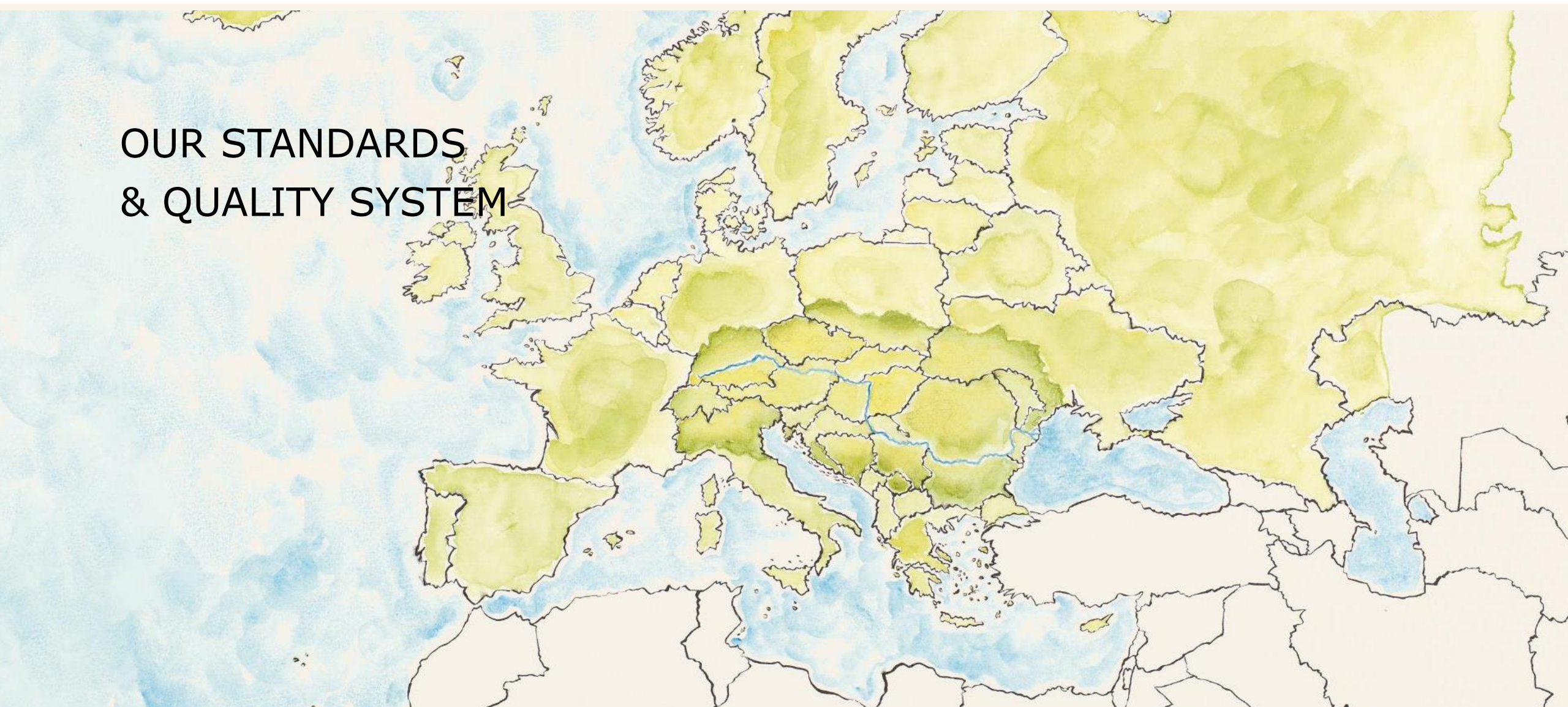


DONAU SOJA & EUROPE SOYA

 Austrian
Development
Agency



OUR STANDARDS
& QUALITY SYSTEM



Our Organisations Values

 Austrian
Development
Agency



Our Standards



Donau Soja Standard

Donau Soja soybeans are

- from the Danube Region
- non-GM
- no deforestation / no conversion
- a product of controlled quality and origin



Europe Soya Standard

Europe Soya soybeans are

- from Europe
- non-GM
- no deforestation/ no conversion
- a product of controlled quality and origin
- Optional: Quantity Equivalence System

Europe Soya is produced under the same principles, requirements and certification system as Donau Soja.

Donau Soja can become Europe Soya, but not vice versa.

The Standards Are Build On 3 Pillars

EUROPEAN ORIGIN AND TRACEABILITY



- ✓ **TRACEABLE/SEGREGATED** from Europe

IT-supported traceability system with traceability certificates

Isotope analyses are used to verify the European origin

NON-GMO



- ✓ **NON-GM QUALITY**

... according to the German VLOG, the Austrian Food Codex and the international Non-GM Danube Region Standards

Both **rapid and PCR tests** are used to verify the non-GM status.

SUSTAINABILITY



- ✓ **NO DEFORESTATION and NO LAND CONVERSION**
cut-off date: January 1, 2008
- ✓ **REDUCED USE OF PESTICIDES**
- ✓ **EU SOCIAL & LABOUR LAWS and ILO STANDARDS**

The Standards Are Based On 10 Principles

**European origin
of soya**



**Non-GM
production**



**Responsible farm
management**



**Best practices in
soil management**



**Best practices in
crop protection**



**Best practices in
water
management**



**Best practices
in waste
management**



**No deforestation
& biodiversity
protection**



**Reduction of
greenhouse gas
emissions**



**Compliance with
human & labour
rights**



The Standards Are Based On 10 Principles



1. European origin of soya

All DS/ES soybeans are produced in continental Europe.



2. Non-GM production

All Donau Soja & Europe Soya produce is non-GM according to the strict German regulation, the Austrian Food Codex or the Non-GM Danube Region Standard.



3. Responsible farm management

- ✓ Legal compliance
- ✓ Best practices (Best practice manual of soybean cultivation)
- ✓ Respect local communities and traditional land users

The Standards Are Based On 10 Principles



4. Best practices in soil management

Insight

- ✓ Methods to improve soil quality and avoid erosion
- ✓ Monitoring of measures e.g soil quality
- ✓ Nutrient application in line with the nutrient balance of the soil



5. Best practices in crop protection

Insight

- ✓ Only substances authorized in EU
- ✓ Ban on substances listed in Rotterdam / Stockholm Convention; WHO 1a and 1b
- ✓ Ban on specific practices e.g. aerial spraying



6. Best practices in water management

Insight

- ✓ Monitoring water use (Water extraction and Irrigation)
- ✓ Good Agricultural Practices (less pollution, less run-off, riparian buffer strips, less contamination)



7. Best practices in waste management

Insight

- ✓ Procedures for accidents and spills
- ✓ Reduce, reuse, recycle
- ✓ Legal compliance (disposal, hazardous substances)

The standards are based on 10 principles



8. Land use & biodiversity protection

- ✓ **No deforestation / no land conversion (cut-off date 2008)**
- ✓ Respecting protected areas and restoration and avoiding damage to natural habitats
- ✓ Protecting rare, threatened or endangered species and prevent invasive species



9. Reduction of greenhouse gas emissions

- ✓ Monitor relevant data contributing to GHG emissions
- ✓ Implement measures to minimize GHG emissions
- ✓ Implement measures to increase carbon sequestration



10. Compliance with human & labour rights

- ✓ EU and international social and labour rights (ILO)
- ✓ Occupational health and safety – safe working conditions

Donau Soja & Europe Soya inspections along the whole value chain

— Three-staged inspection system



3. Donau Soja's integrity programme

(audits, sample analysis and paper checks)

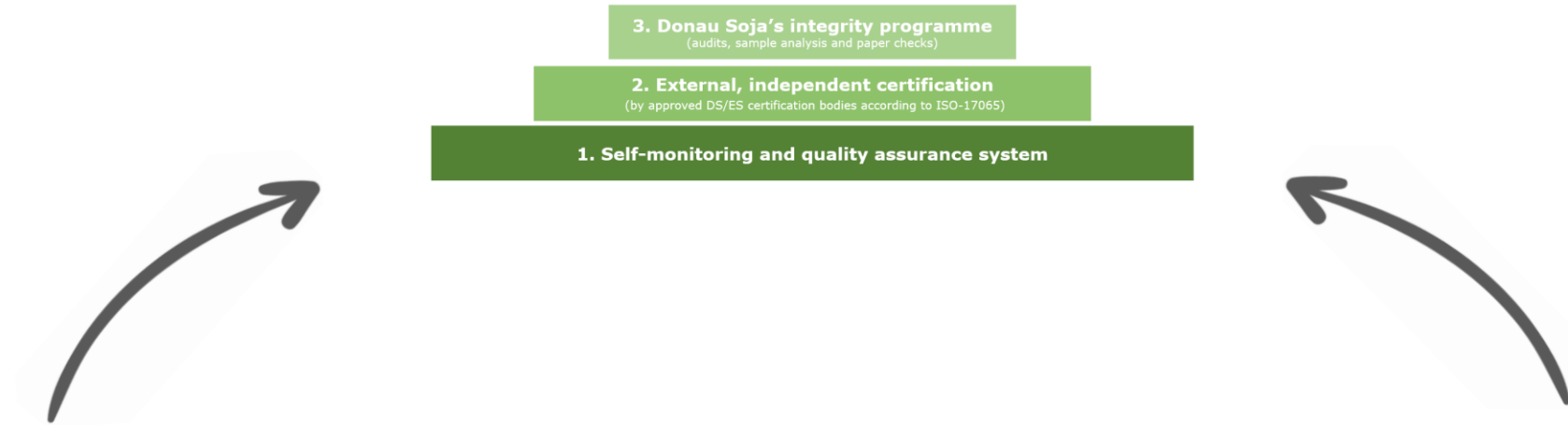
2. External, independent certification

(by approved DS/ES certification bodies according to ISO-17065)

1. Self-monitoring and quality assurance system

Traceability & Transparency

Three-staged inspection system



Our transparency tools to support the inspection system

IT-Supported Traceability System

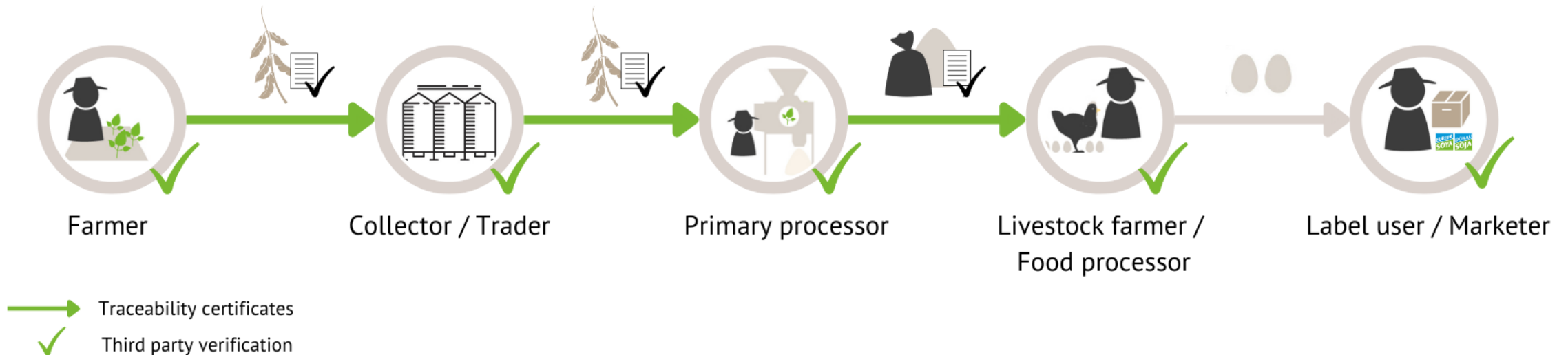


Origin testing using the Soya
Isotope Database



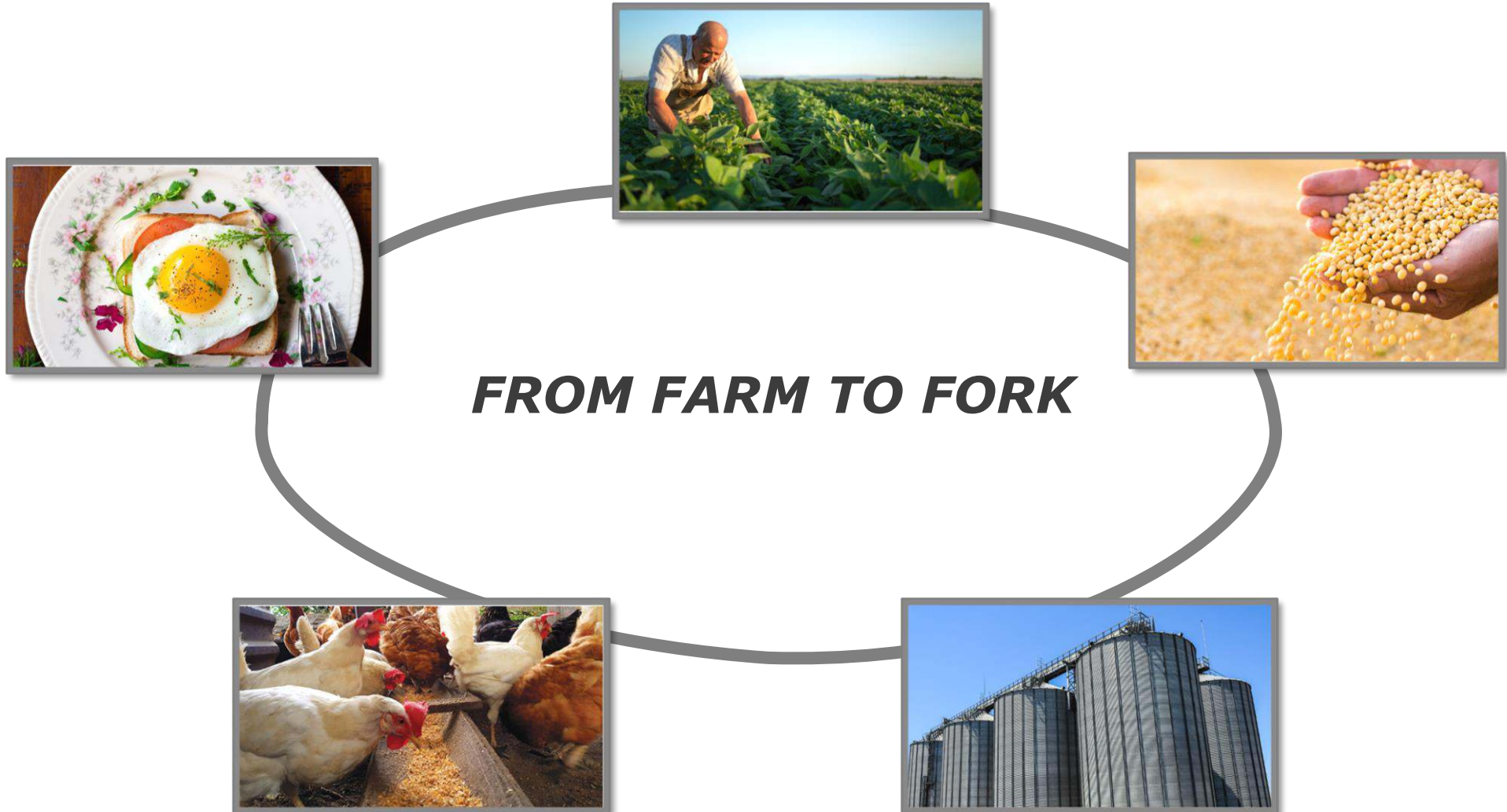
IT-supported Traceability System

Continuous traceability
→ **ensuring a separated flow of goods**



Traceability & Transparency

Donau Soja & Europe Soya guarantee regionality





Non-GM Quality

All Donau Soya and Europe Soya products are "non-GMO"

according to the strict German law, the Austrian Food Codex or the Non-GM Danube Region Standard.





Non-GM Quality

Guaranteed by strict control and analysis

- **Non-GM is guaranteed through inspections** of producers and processors **at all levels**
- **GMO analyses** (PCR) in the course of the certification audits
- **GMO analyses** (PCR) and rapid test in the course of the Donau Soja integrity audits
- Self-monitoring of certified partners – GMO rapid test on RoundupReady® & LibertyLink®



Donau Soja & Europe Soya Origin



**Soybeans from the
Danube region**



Soybeans from Europe

Best Practice In Crop Protection

Our standards require the reduced use of plant protection products:

- In Donau Soja & Europa Soja cultivation, only pesticides approved in the EU are allowed – also in non-EU countries
- Pesticides listed in the Stockholm and Rotterdam Convention as well as in the WHO lists 1a and 1b¹ are **prohibited**
- Ban on specific practices e.g. aerial spraying



Guaranteed by strict requirements and control

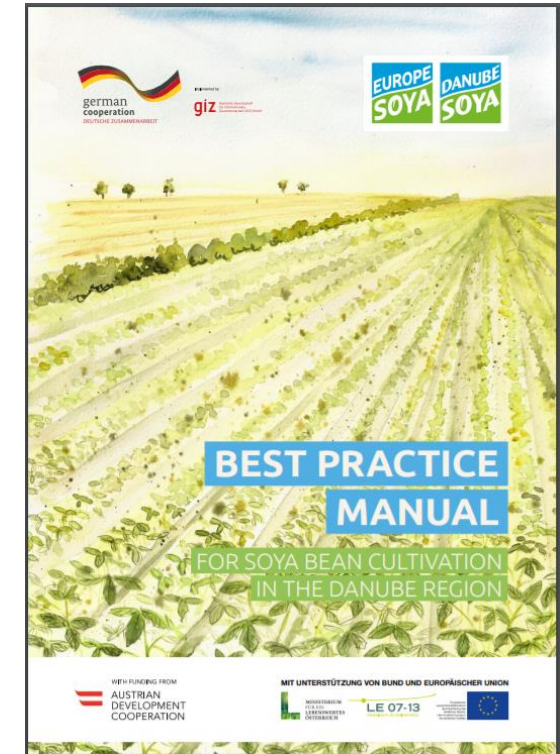
- Obligatory pesticide testing in countries of higher risk
- Pesticid testing as part of the Donau Soja integrity programm

¹ https://www.who.int/ipcs/publications/pesticides_hazard/en/

Best Practice In Crop Protection

Donau Soja Best Practice Manual

- recommendations for farmers on how to optimize and reduce their pesticide use
- International version available in English
- Regional versions for Serbia, Moldova (Romanian and Russian) and for Ukraine



Download [Donau Soja Best Practice Manual](#)

Deforestation- and conversion-free Cultivation

Principle 8: No deforestation, no land conversion



The standard's 10 principles

What types of land conversion do we cover?



Non-arable land to cropland



Pasture to cropland



Forest to cropland



Meadow to cropland



Swamp to cropland



Deforestation- and Conversion-free verification system

 Austrian
Development
Agency



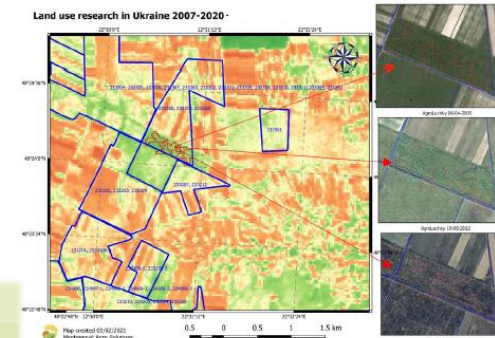
Donau Soja/Europe Soya production:

- cut-off date for land conversion: 01.01.2008
- respect natural reserves (protected areas)

Part of Donau Soja Integrity Programme:

Land use change verification project

- Analysis of satellite data of DS/ES cultivation areas and fields
- Detection of land conversion by comparison of vegetation 2007 vs. 2020, using vegetation indices (e.g. NDVI, EVI, SAUI, NDWI)
- Identification of not allowed soya cultivation in natural reserves



→ Donau Soja / Europe Soya is deforestation-free and conversion-free!

Deforestation- and Conversion-free verification system

Analyses of satellite data:



1. Determination of the area and year of interest



2. Collection and selection of the relevant satellite images

✓ by using satellite programmes Landsat and Sentinel



3. Identification of the type of vegetation in 2007 and the year of interest

✓ using vegetation indexes (e.g. NDVI, EVI...) and time curves for vegetation indexes and crops



4. Identification of plots with potential land conversion

✓ by comparison of the vegetation in 2007 and the year of interest (e.g. 2020)

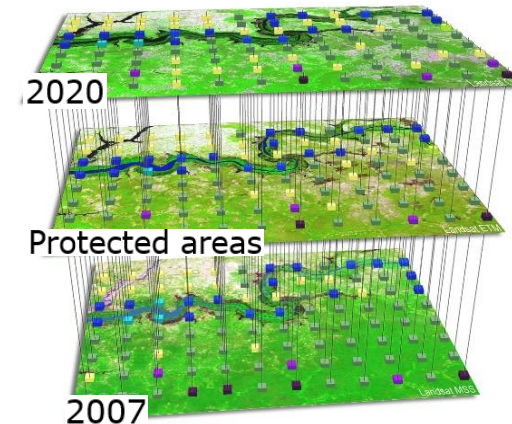
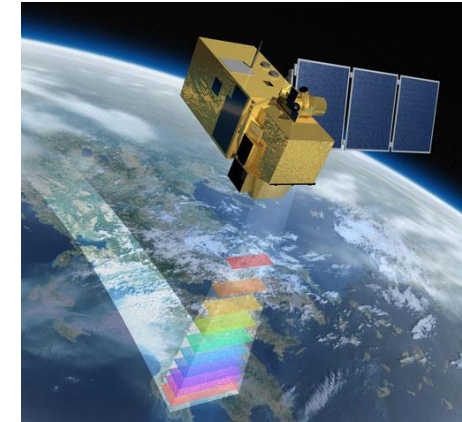


5. Detailed analyses of plots with potential land conversion

✓ by using high spatial resolution images

✓ analyses of images in smaller time intervals (between 2007 – 2020),

✓ verification of the legal status of the plot (using local land register – cadastral data)



Benefits at a glance (1)

	Donau Soja (DS)/Europe Soya (ES)	European soy (without certification)
Product quality & safety	<ul style="list-style-type: none"> • Quality product according to DS/ES standards • Certification by independent certification bodies • Controlled quality along the whole value chain • from field to fork 	<ul style="list-style-type: none"> • No name product • No certification from field to fork • No security
Genetic engineering	Compliance with the German (VLOG) or Austrian (Codex) non-GM Standards or the Non-GM Danube Region Standard	Non-GM not guaranteed/checked/certified in the supply chain
Pesticides	EU legislation as baseline, ban on Stockholm & Rotterdam convention chemicals, ban on WHO 1a/1b chemicals, ban for aerial spraying, no desiccation and thus no Glyphosate in cultivation	No pesticide regulation except for respective national laws that can be much below EU legislation (e.g. Ukraine)
Land Use Change	No land use change, no clearing of natural areas, no cultivation in protected areas	No regulation on land use change except for respective national laws if existing
Origin	Independently inspected origin back to the farm	No controlled origin

Benefits at a glance (2)

	Donau Soja (DS)/Europe Soya (ES)	European soy (without certification)
Marketing & Communication	Donau Soja offices as contact points for partners and consumers; communication with media and other stakeholders	No specific communication
Consumer label	Product label available, clear message to the consumer about safe and traceable quality product;	No label No-Name-Product
Farmers	Certified and labelled products support the development of stable supply chains for farmers, collectors and processors	In anonymous supply chains spot market buying dominates – often to the detriment of weaker market players such as farmers
Network, consultation & services	Donau Soja Organisation has an existing network of offices and consultants	No structure, no service

Products On The Market

Several animal and plant-based products produced with Donau Soja or Europe Soya certified soy are available on the markets of:

- Austria
- Germany
- Switzerland
- Serbia
- Spain
- Portugal etc.

Best practice example: Austrian egg sector



Since 2013, Austrian egg sector changed to Donau Soja

Plant-Based: Tofu & meat alternatives



Animal-Based: Fed with Donau/Europe Soya



Food Service: McDonald's breakfast in AT & DE

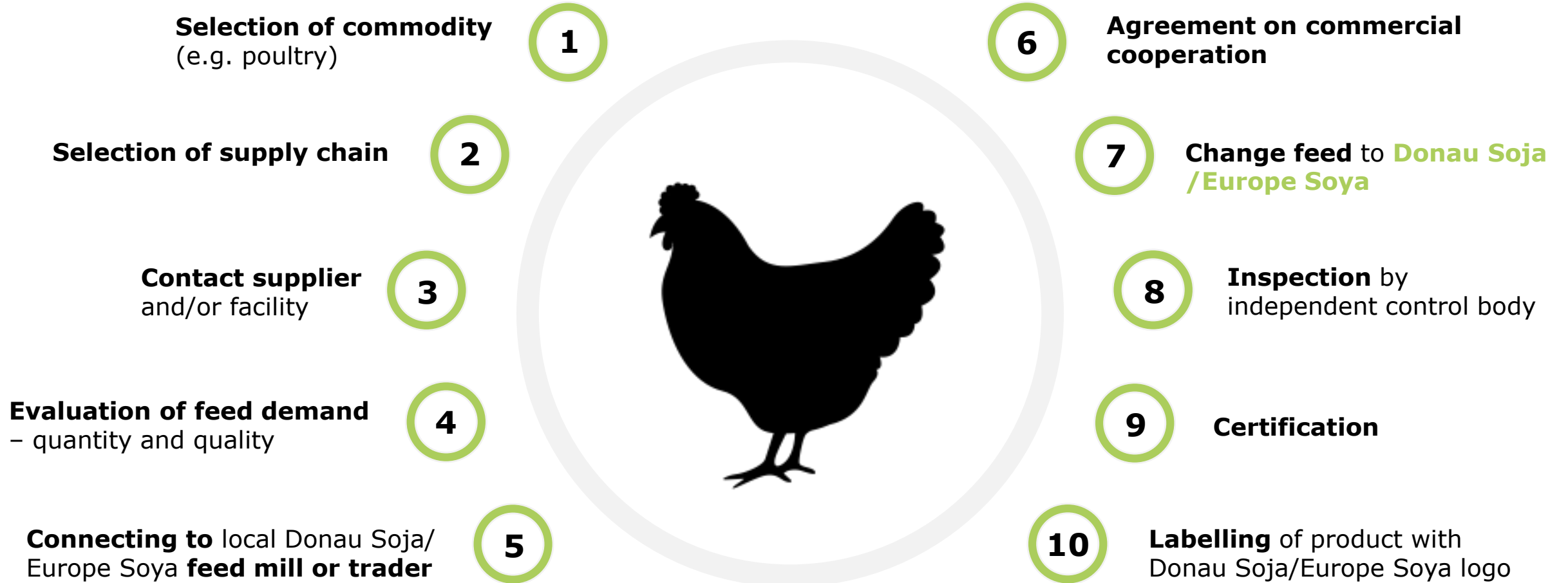


100% made with **Europe Soya** certified **eggs**

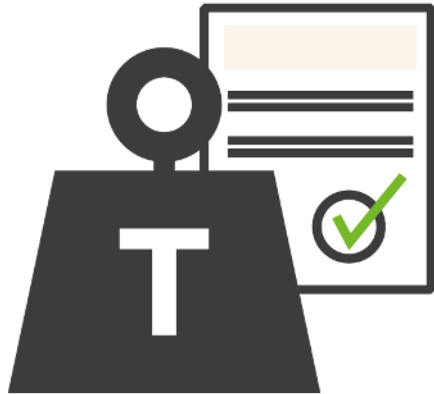
When buying food,
83%
of Austrians
make sure that
it is produced
**free of genetic
engineering.**



10 Steps: How To Realise Projects Together



Steps: How To Get A Donau Soja / Europe Soya Certificate



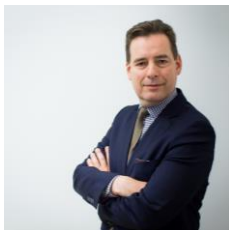
- 1** Read “**Steps of Certification**” and the Donau Soja / Europe Soya **Guidelines** (available in the DOWNLOADS section on our homepage)
- 2** **Implement the requirements in your company** (non-GM, physical segregation, consistent traceability)
- 3** **Contact** an approved **certification body**
- 4** **Become a member** of the Donau Soja Association (obligatory for R04-06)
- 5** **Audit & Certification**
- 6** **Acquire soya** (products) from certified companies only

Contacts

Matthias Krön

Chairman

kroen@donausoja.org



Dagmar Gollan

Executive Director Association &
Head of Quality Management

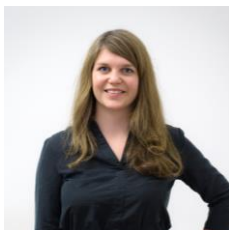
gollan@donausoja.org



Julia Weihs

Standard and Sustainability

weihs@donausoja.org



Bojan Tomek

Project Officer Research & Innovation
and Quality Management

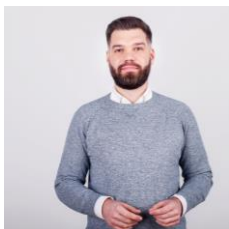
tomek@donausoja.org



Volodymyr Pugachov

QM Manager Eastern Europe

Quality_ua@donausoja.org



Daniela Arnberger

Quality Assurance and Quality Management

arnberger@donausoja.org

